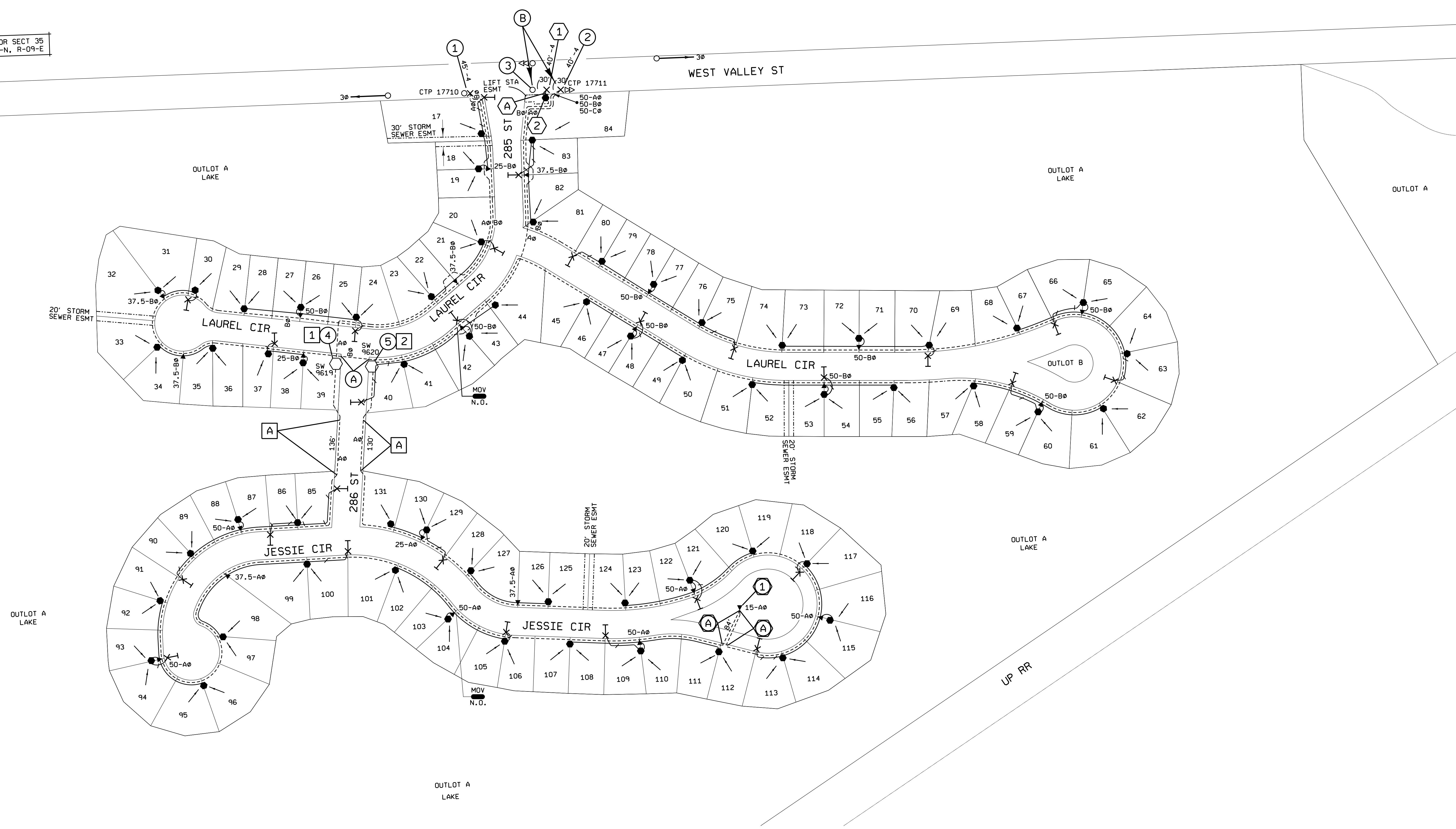




NE COR SECT 35
T-16-N, R-09-E

288 ST

WEST VALLEY ST



- LEGEND**
- *4/0 AL XLP TRX 120/240V SEC SVCE CA (0000000355) TO BE INSTALLED AS NEEDED.
 - INSTL 350 KCMIL AL XLP TRX 120/240V SEC CA (0000000357).
 - INSTL URD PED STD 165B & 3" CND FOR HOUSE SVCES AS NEEDED (MAX OF 4 SVCES PER PED).
 - INSTL 1--*1/0 AL 15KV XLP JKT 1Ø PRI CA (0000000349).
 - INSTL 1--*10 2-CNDCT 120V UF ROMEX ST LT SEC CA (0000128668).
 - ▲ INSTL PM XFMR STD 175 (SIZE OF XFMR AS NOTED BY XFMR LOCATION), XFMR SLAB STD 118B & FCI STD 181A6 (EXCEPT XFMR AT NO PRINTS).
 - ✂ INSTL MTHD 61 100W EQUIV LED SU ST LT STD 750L61P, STD 75325ED & STD 75551 (MIN 6164L).

- 0068597201**
1. CTP 17710. REPL 40'-4 POLE, STD 389A, STD 403NR, STD 401A4 / 45'-4 POLE (15' E), GND STD 403NR, STD 401A4, INSTL STD 389A, STD 1055A (100A CO, 8ØE FU, AØ & BØ).
 2. CTP 17711. SET 40'-4 POLE, GND STD 401A4, STD 403NR, INSTL STD 371A (W), STD 368 (W), STD 1055A (100A CO, 8ØE FU, AØ & BØ), SET 16M PISA STD 435B, GUY STD 465B Ø PRI POSN (30' LEAD E), SET 16M PISA STD 435B, GUY STD 443 Ø NEUT POSN (25' LEAD E).
 3. REPL STD 465B, STD 435B, STD 443, STD 435A / 3-STD 322, STD 370 (E), STD 368 (E).
 4. SW 9519. INSTL STD 157 (200A, 1Ø, 4-WAY), STD 297B.
 5. SW 9520. INSTL STD 157 (200A, 1Ø, 4-WAY), STD 297B.

- CONDUCTOR NOTE**
- A. BORE 1--*1/0 AL 15KV XLP JKT 1Ø PRI CA (0000000349).
 - B. INSTL 4--*2-7/1 ASCR 13.8KV PRI & NEUT (SAG RD 299-2C).

- 0069644901**
1. SET 40'-4 POLE, GND STD 401A4, STD 403NR, INSTL STD 389A, XFMR STD 863A (3-50KVA, 10X FU, 277/480V, 3Ø), STD 866, STD 608C2 (SEE NOTE 2).
 2. INSTL SEC PED FROM NOTE 1-AT STAKED LOC. THIS PED WILL NOT BE SET NEXT TO THE POLE.

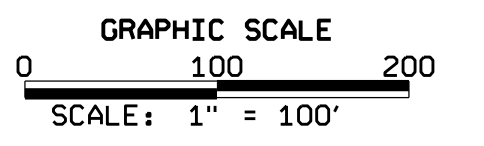
- CONDUCTOR NOTE**
- A. INSTL 1--*4/0 AL DUAD 277/480V SEC CA (0000000358).

- 0068597601**
1. SW 9619. RMV MDL STD 157, TERM STD 297B. SPLC EXST 1--*1/0 AL 15KV XLP JKT 1Ø PRI CA TO NEW 1--*1/0 AL 15KV XLP JKT 1Ø PRI CA, STD 2891.
 2. SW 9620. RMV MDL STD 157, TERM STD 297B. SPLC EXST 1--*1/0 AL 15KV XLP JKT 1Ø PRI CA TO NEW 1--*1/0 AL 15KV XLP JKT 1Ø PRI CA, STD 2891.

- CONDUCTOR NOTE**
- A. BORE 1--*1/0 AL 15KV XLP JKT 1Ø PRI CA (0000000349).

- 0069645001**
1. INSTL PM XFMR STD 175LB (15KVA, AØ), STD 118, 2-STD 297B, STD 181A6.

- CONDUCTOR NOTE**
- A. BORE 1--*1/0 AL 15KV XLP JKT 1Ø PRI CA (0000000349).



SR 00058704	0069645001	PH 3 LIFT STA
SR 00058555	0068597701	PH 3 ST LTS
SR 00058554	0068597601	PH 3 URD
SR 00058702	0069644901	PH 2 LIFT STA
SR 00058553	0068597401	PH 2 ST LTS
SR 00058552	0068597201	PH 2 URD

SCALE	1" = 100'
DRAFT	09-15-20 AMJ
CHECK	10-19-20 TAG
PROJENGR	GABRIEL
NOTED	
PE	
APPD.	10-19-20 GEL
APPD.	
DEPT.	DISTRIBUTION

FLATWATER 2 & 3
285 ST & WEST VALLEY ST
VALLEY, NE

LOTS 17-131, OUTLOTS A, B, D
CKT 328

SKE-20-406

